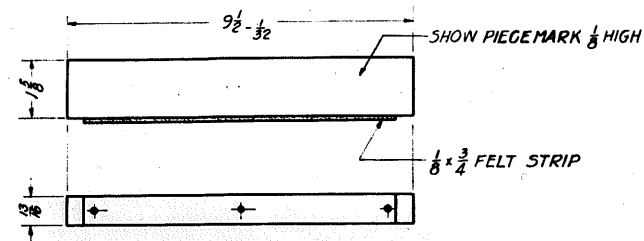
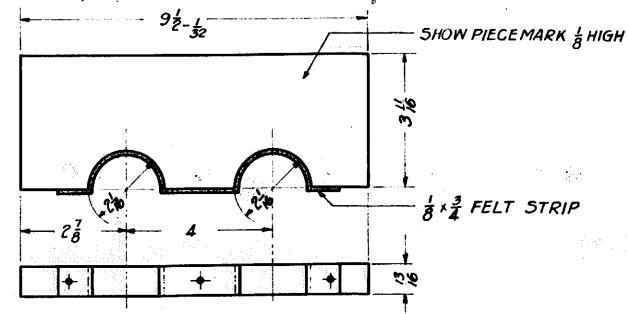


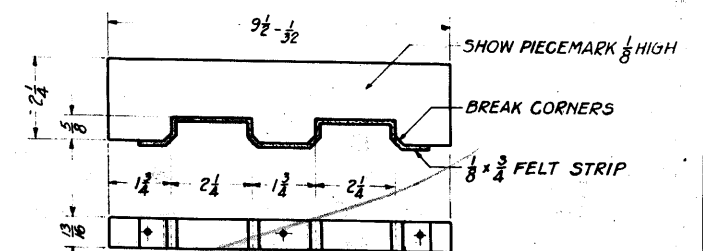
DIP IN LINSEED OIL AND DRIER



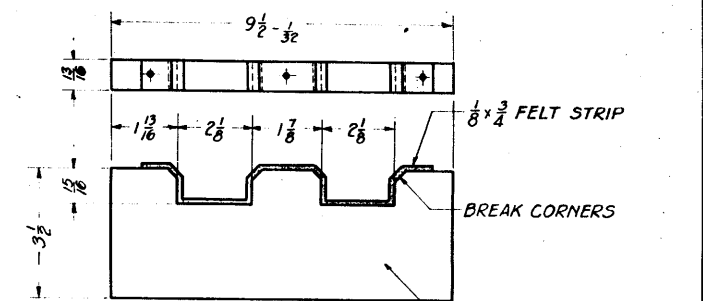
PACKING, TOP (131 K
WOOD, GROUP 1
SURFACED



PACKING, UPPER (131 L
WOOD, GROUP I
SURFACED

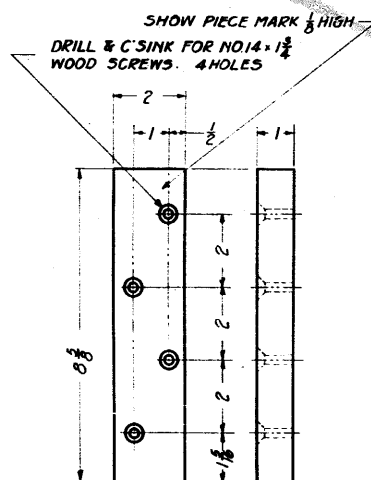


PACKING, REAR, UPPER (131 H
WOOD, GROUP 1
SURFACED

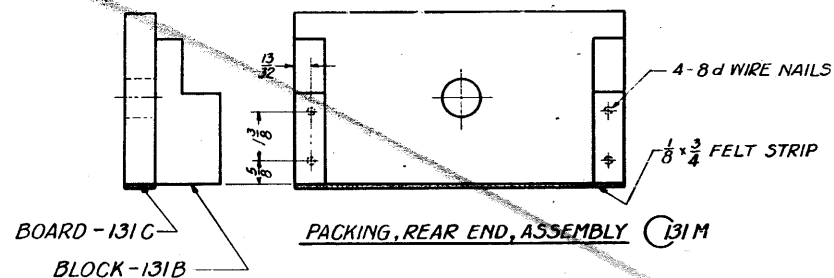


PACKING, REAR, LOWER (131 G
WOOD. GROUP 1
SURFACED

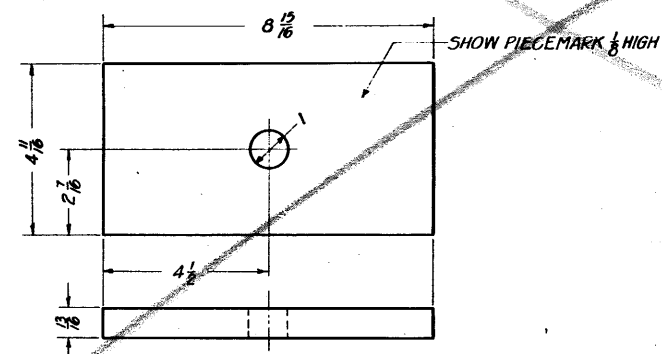
NOTE:-
EACH FELT STRIP TO BE GLUED AND
TACKED ON WITH THREE NO 6 TACKS.
ALL 6d AND 8d WIRE NAILS TO BE
CEMENT COATED.



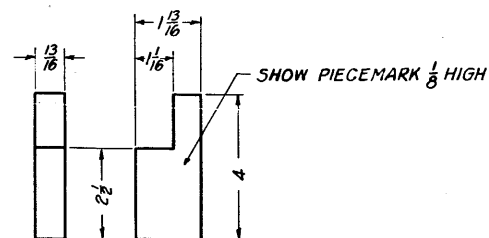
CLEAT, COVER (13) D
WOOD, GROUP 1
SURFACED



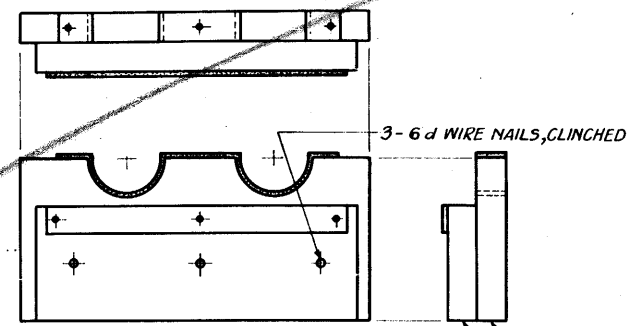
PACKING, REAR END, ASSEMBLY (131 M)



BOARD, REAR END PACKING (131 C)
WOOD, GROUP I
SURFACED
ASSEMBLE WITH 131 B

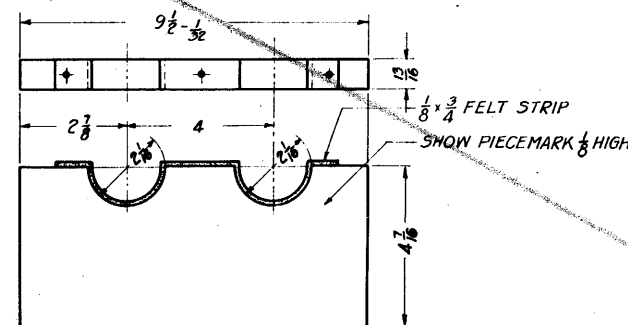


BLOCK, REAR END PACKING (131 B)
WOOD, GROUP 1
SURFACED
ASSEMBLE WITH 131 C

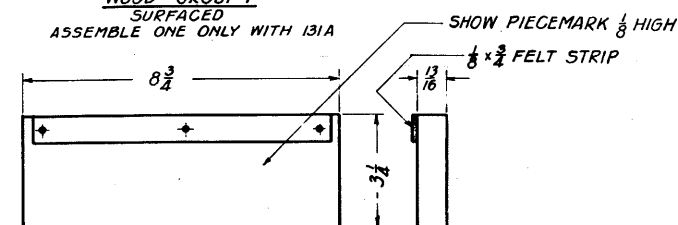


PACKING, LOWER, ASSEMBLY (131 N

PACKING-131 F
BLOCK-131 A



PACKING, LOWER (131F)
WOOD GROUP I
SURFACED
ASSEMBLE ONE ONLY WITH 131A



BLOCK, LOWER PACKING (131 A)
WOOD, GROUP 1
SURFACED
ASSEMBLE WITH 131 F

TOLERANCE $\pm \frac{1}{32}$ ALLOWED ON ALL DIMENSIONS UNLESS OTHERWISE SPECIFIED.

SCALE $\frac{1}{2}$

CHEST, PACKING					
FOR TWO BROWNING MACHINE GUNS CAL 30; M19A4 (FLEX)					
DETAILS					
SEPT. 30, 1936		CLASS DIVISION		DRAWING FILE	
REVISIONS		49	1	131	
SYMBOL					
DRG. PERTAINS TO		OPTSMAN C.E.O.	TRACER C.F.B.	LDC OPTSMAN P.J.C.	
39-1-13A	CHEST, PACKING FOR	CHECKER	CHIEF OPTSMAN		
	30 BNG M19A4 (FLEX)	2 5 8	W.S.	Sent.	OK
SUBMITTED:-					
/ Wamondy					
LT. COL. ORD DEPT. U.S.A.					
EXAMINED:-					
LT. COL. ORD DEPT. U.S.A.					
APPROVED BY ORDER OF THE CHIEF OF ORDNANCE					
LT. COL. ORD DEPT. U.S.A.					
ORDNANCE DEPT. U.S.A.					